



COVID-19 Epidemiology Update

OTTAWA PUBLIC HEALTH. Report compiled on May 18, 2020, 11:00 am

Contents

Purpose	1
Summary	1
Cases Over Time.....	1
Case Characteristics.....	4
Severity of Cases.....	6
Hospitalizations among Ottawa residents with COVID-19	6
Exposure Settings of Confirmed COVID-19 Cases.....	9
Outbreaks	10
Data Notes & Sources	11
Data Tables	12

Ottawa Public Health (OPH) has transitioned to a new case management and reporting system. This transition will position OPH to better manage COVID-19 case volumes, facilitate remote work options for the case management team, and continue to uphold provincial reporting obligations. To support the transition, OPH is currently conducting quality assurance to validate the data in the new system.

Purpose

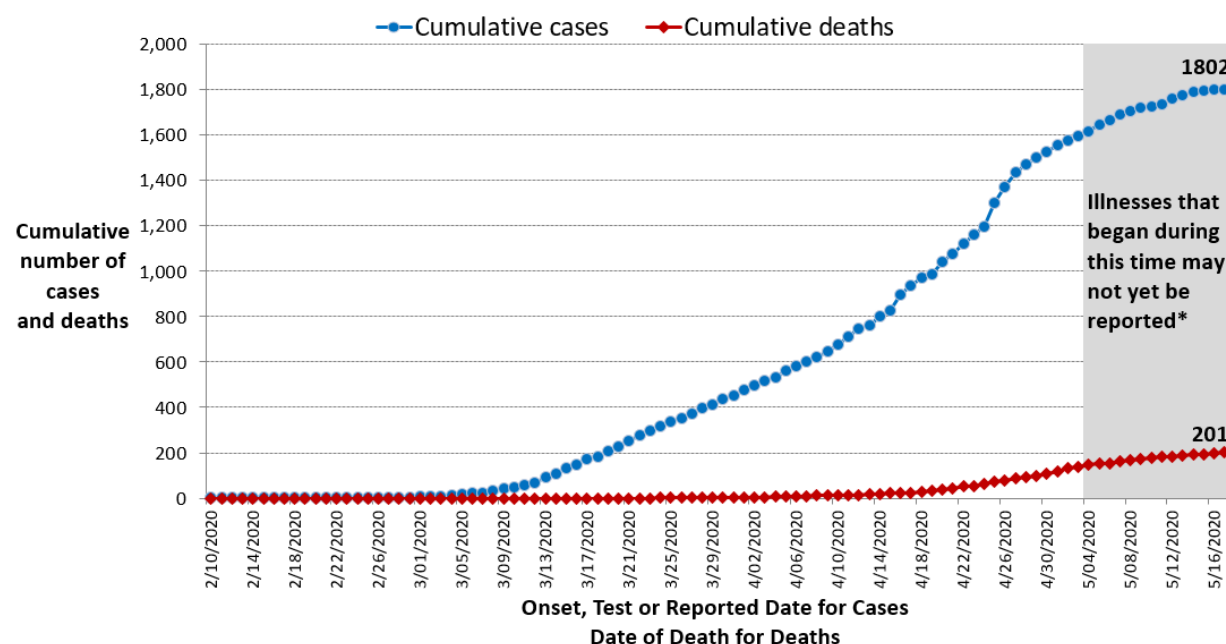
This daily report provides an epidemiologic summary of COVID-19 activity in Ottawa to date. The report includes the most current information available from the COVID-19 Ottawa Database (COD) as of 2:00 pm May 17, 2020 and the integrated Public Health Information System (iPHIS) as of 4:00 p.m. May 17, 2020.

Summary

- 1,802 laboratory-confirmed cases, including 201 deaths, have been reported in Ottawa.
- This includes 11 new cases and 7 new deaths since the previous report.
- 48 Ottawa residents with COVID-19 are currently hospitalized.
- There are 23 ongoing outbreaks in [institutions](#).

Cases Over Time

Figure 1. Cumulative epidemiological curve of Ottawa residents with confirmed COVID-19, by the EARLIEST of symptom onset date, test and reported date or date of death

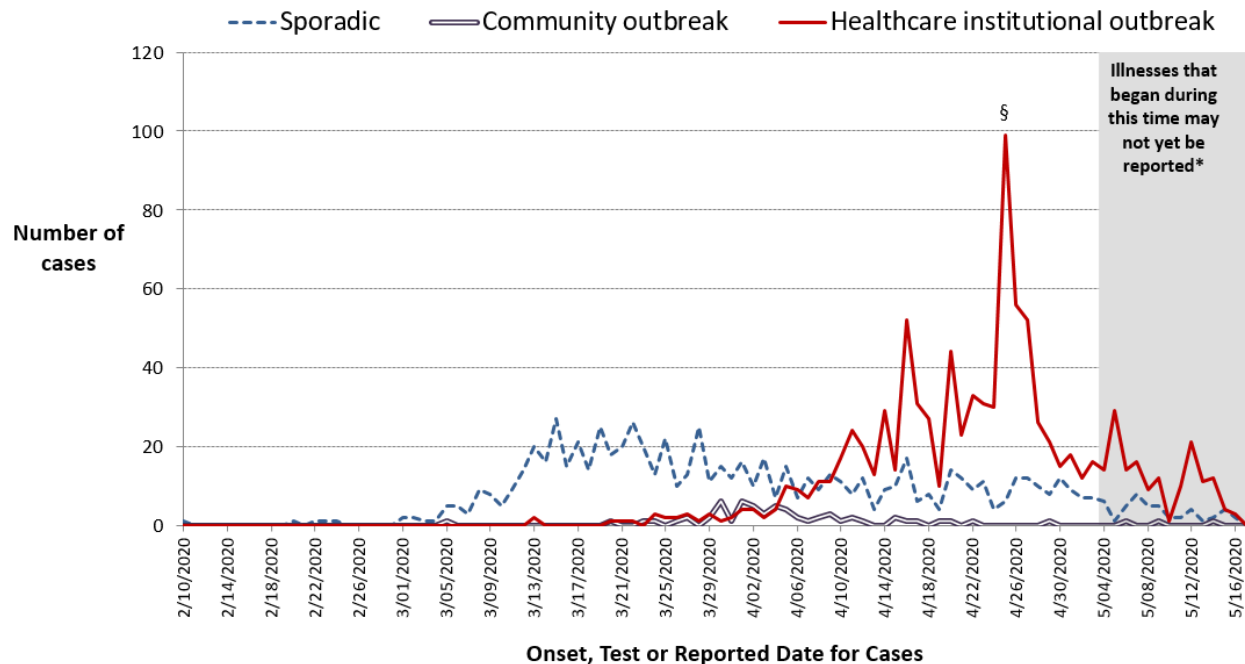


Notes:

1. Data are from the COD as of 2:00 p.m. on May 17, 2020.
2. As the case is investigated and more information is available, the dates in the graph are updated.
3. Confirmed cases are those with a confirmed COVID-19 laboratory result as per the Ministry of Health Public health management of cases and contacts of COVID-19 in Ontario. March 25, 2020 version 6.0.
4. A patient's exposure may have occurred up to 14 days prior to onset of symptoms.
5. *Symptomatic cases occurring in approximately the last 14 days are likely under-reported due to the time for individuals to seek medical assessment, availability of testing, and receipt of test results.
6. ERRATA: In reports before May 11, 2020, the death data were graphed to the earliest of onset date, test and reported date. As of May 11, 2020, the death data are graphed to the date of death. Since data represent a snapshot in time and case investigations are in progress, there may be some instances where a date of death is not yet entered in the COD database. In these instances, the date of death is captured as the reported date.



Figure 2. Epidemiological curve of Ottawa residents with confirmed COVID-19, by the EARLIEST of onset, test, and reported date, by outbreak association[†] (n=1,802)



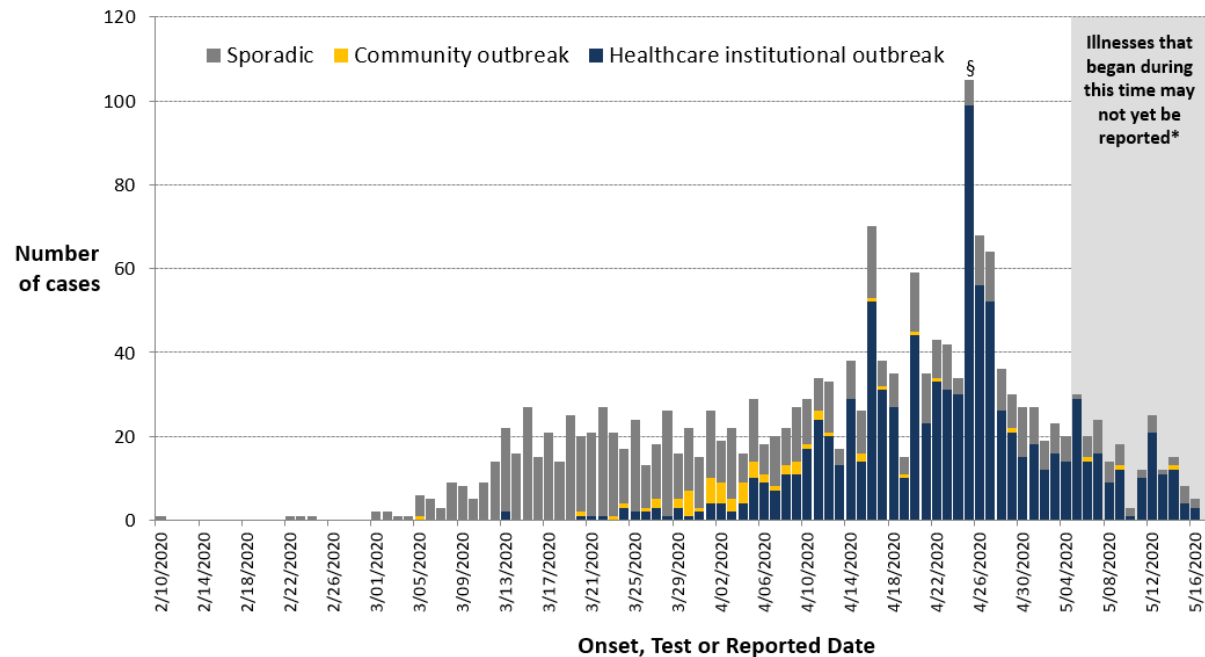
Notes:

1. Data are from the COD as of 2:00 p.m. on May 17, 2020.
2. As the case is investigated and more information is available, the dates in the graph are updated.
3. Confirmed cases are those with a confirmed COVID-19 laboratory result as per the Ministry of Health Public health management of cases and contacts of COVID-19 in Ontario. March 25, 2020 version 6.0.
4. [†]Cases are associated with a specific, isolated community outbreak; a healthcare institutional outbreak; or no known outbreak (i.e., sporadic).
5. A patient's exposure may have occurred up to 14 days prior to onset of symptoms.
6. * Symptomatic sporadic cases occurring in approximately the last 14 days are likely under-reported due to the time for individuals to seek medical assessment, availability of testing, and receipt of test results.
7. Healthcare institutions include long term care facilities, retirement homes, and hospitals.
8. § Surveillance testing for COVID-19 began in long term care facilities on April 25, 2020.
9. The province has had to limit testing to priority groups. Since only a small fraction of all the persons who were infected with the COVID-19 virus were tested, the number of reported confirmed community cases underestimates the actual number of infections. Information on overall infection rates in Canada will not be available until large studies on COVID-19 antibody presence in blood serum are conducted. Based on available information, the actual number of infections may lie from 5 to 30 times or more than the reported number of cases.¹

¹ Richters P. Severe underestimation of COVID-19 case numbers: Effect of epidemic growth rate and test restrictions. *medRxiv*. April 2020: 2020.04.13. doi.org/10.1101/2020.04.13.20064220



Figure 3. Epidemiological curve of Ottawa residents with confirmed COVID-19, by the EARLIEST of onset, test and reported date, by outbreak association† (n=1,802)



Notes:

1. Data are from the COD as of 2:00 p.m. on May 17, 2020.
2. As the case is investigated and more information is available, the dates in the graph are updated.
3. Confirmed cases are those with a confirmed COVID-19 laboratory result as per the Ministry of Health Public health management of cases and contacts of COVID-19 in Ontario. March 25, 2020 version 6.0.
4. †Cases are associated with a specific, isolated community outbreak; a healthcare institutional outbreak; or no known outbreak (i.e., sporadic).
5. A patient's exposure may have occurred up to 14 days prior to onset of symptoms.
6. *Symptomatic cases occurring in approximately the last 14 days are likely under-reported due to the time for individuals to seek medical assessment, availability of testing, and receipt of test results.
7. Healthcare institutions include long term care facilities, retirement homes, and hospitals.
8. § Surveillance testing for COVID-19 began in long term care facilities on April 25, 2020.
9. The province has had to limit testing to priority groups. Since only a small fraction of all the persons who were infected with the COVID-19 virus were tested, the number of reported confirmed community cases underestimates the actual number of infections. Information on overall infection rates in Canada will not be available until large studies on COVID-19 antibody presence in blood serum are conducted. Based on available information, the actual number of infections may lie from 5 to 30 times or more than the reported number of cases.²

² Richters P. Severe underestimation of COVID-19 case numbers: Effect of epidemic growth rate and test restrictions. *medRxiv*. April 2020: 2020.04.13. doi.org/10.1101/2020.04.13.20064220



Table 1. Age, gender and occupation (health care worker or first responder) of Ottawa residents with confirmed COVID-19

Measure	Number	Percentage
Case count	1,802	-
Change from previous report	11	1% increase
Age, median (range)	57 years (4m-105y)	-
Age		
0-9 years	22	1%
10-19 years	45	3%
20 to 29 years	185	10%
30 to 39 years	227	13%
40 to 49 years	242	13%
50 to 59 years	264	15%
60 to 69 years	225	12%
70 to 79 years	166	9%
80 to 89 years	244	14%
90+ years	182	10%
Unknown	0	0%
Gender		
Female	1,072	59%
Male	730	41%
Unknown	0	0%
Health care workers and first responders	478	27%

Notes:

1. Data are from the COD as of 2:00 p.m. on May 17, 2020.
2. Confirmed cases are those with a confirmed COVID-19 laboratory result as per the Ministry of Health Public health management of cases and contacts of COVID-19 in Ontario. March 25, 2020 version 6.0.



Table 2. Age, gender and occupation (health care worker or first responder) of Ottawa residents with confirmed COVID-19 who have died

Measure	Number	Percentage
Cumulative cases	1,802	
Cumulative deaths	201	11%
Change from previous report	7	4% increase
Age, median (range)	86 years (39-105)	
Age		Percent of deaths with each subgroup*
0-9 years	0	0%
10 to 19 years	0	0%
20 to 29 years	0	0%
30 to 39 years	1	<1%
40 to 49 years	0	0%
50 to 59 years	6	2%
60 to 69 years	13	6%
70 to 79 years	33	20%
80 to 89 years	80	33%
90+ years	68	37%
Unknown	0	0%
Gender		
Female	109	10%
Male	92	13%
Unknown	0	0%
Healthcare workers and first responders	1	<1%

Notes:

1. Data are from the COD as of 2:00 p.m. on May 17, 2020.
2. *The percent of deaths by age group uses the number of cases (Table 1) for each age group as the denominator. The percent of deaths by gender uses the number of cases in that gender group as the denominator. The percent of deaths by occupation is calculated using the total number of cases in that occupation as the denominator.
3. Confirmed cases are those with a confirmed COVID-19 laboratory result as per the Ministry of Health Public health management of cases and contacts of COVID-19 in Ontario. March 25, 2020 version 6.0.



Severity of Cases

Hospitalizations among Ottawa residents with COVID-19

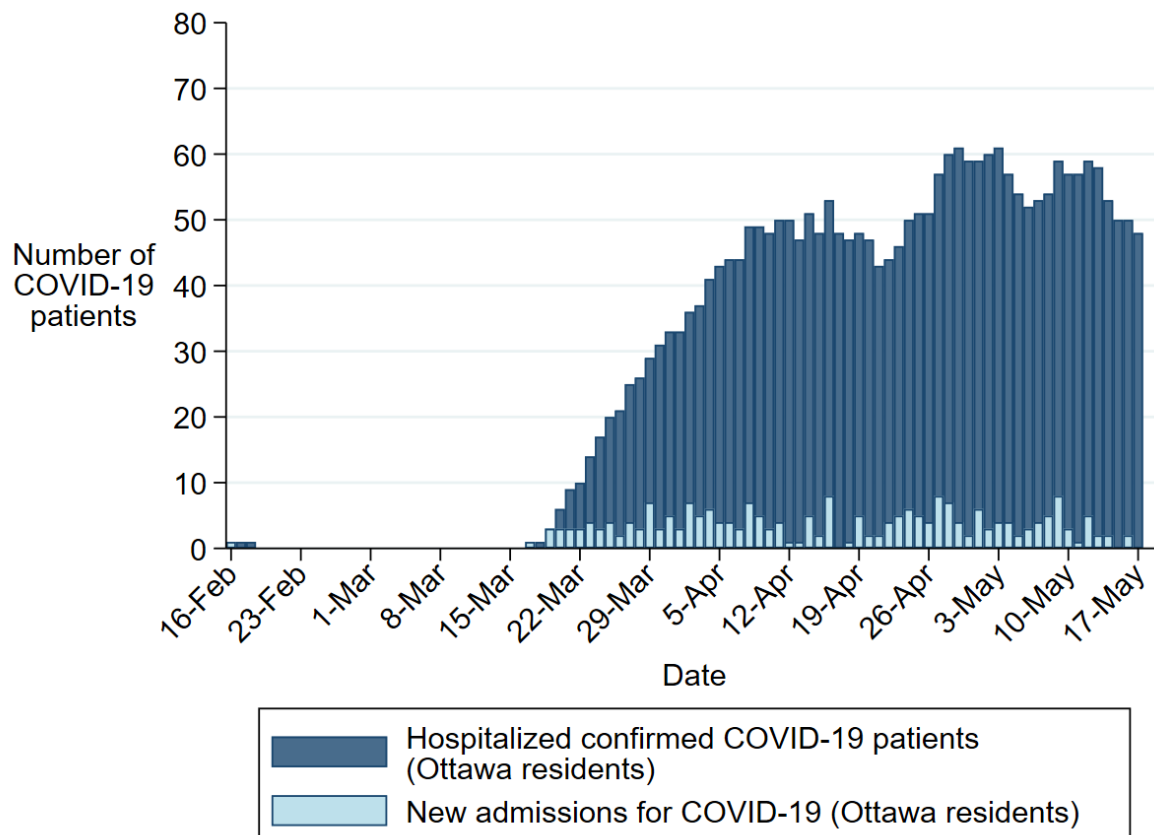
The data presented in Figure 4 and Tables 3-4 present information about Ottawa residents with COVID-19 who have been admitted to hospitals in Ottawa. These indicators help us monitor the level and severity of infection within the City.

Please consider the hospitalization data in this section to be preliminary. OPH is collaborating with local hospitals to receive daily electronic updates on hospitalizations for COVID-19 and we are conducting quality assurance work while incorporating this new data source. It is anticipated to provide more complete and accurate hospitalization data once it is fully incorporated.

The number of hospital admissions recorded in the past 3-5 days should be considered preliminary as hospital data are still being received and entered for this time period.



Figure 4. Number of Ottawa residents with confirmed COVID-19 newly admitted to hospital and number currently hospitalized, by day



Notes:

1. Data are from the COD as of 2:00 p.m. on May 17, 2020. Confirmed cases are those with a confirmed COVID-19 laboratory result as per the Ministry of Health Public health management of cases and contacts of COVID-19 in Ontario. March 25, 2020 version 6.0.
2. The dark blue bars represent the number of COVID-19 patients hospitalized. The light blue bars represent the number of newly hospitalized COVID-19 patients.
3. Data for this figure is available at [Open Data Ottawa](#).
4. There may be a data entry delay between the number of new admissions to hospital and the number of patients currently in hospital. Numbers may change based on the outcome of case investigations.
5. New admissions, discharges, deaths, and data entry lags contribute to daily fluctuations in the number of patients currently in hospital making comparisons to the previous day difficult. New hospital admissions and counts of currently in hospital may lag and are subject to change as the hospitalization information is tied to case investigation. Comparisons should not be made between the number of patients currently in hospital and new hospital admissions since hospitalization information is only updated once a patient is confirmed COVID-19 and admission information would then be updated retrospectively. For example, there can be a delay between when a patient is admitted to hospital, tested for COVID-19, and receive test results. If positive results are received, a case investigation begins and their hospitalization information is updated, resulting in a lag in the newly admitted and currently hospitalized information.
6. Patients who are admitted multiple times to hospital are only counted on their first admission date.



Table 3. Severity of disease for Ottawa residents with confirmed COVID-19

Measure	Number	Percentage
All cases	1,802	
Cumulative hospitalized	226	13%
Currently in hospital*	48	3%
Cumulative intensive care	58	3%
Deaths	201	11%
Resolved ⁴	1,396	77%

Notes:

1. Data are from the COD as of 2:00 p.m. on May 17, 2020.
2. Confirmed cases are those with a confirmed COVID-19 laboratory result as per the Ministry of Health Public health management of cases and contacts of COVID-19 in Ontario. March 25, 2020 version 6.0.
3. Intensive care patients are a subset of hospitalized patients.
4. As per provincial practice, cases that are 14 days past symptom onset (if available) or 14 days past the episode date are classified as resolved for non-fatal cases that are not currently listed as hospitalized. Cases are also classified as resolved if the case is reported as “recovered” in the COD. This represents a change from reports prior to May 1, 2020 that relied solely on the classification in the COD/iPHIS and increases the number classified as Resolved.
5. * New admissions, discharges, deaths, and data entry lags contribute to daily fluctuations in the number of patients currently in hospital making comparisons to the previous day difficult. New hospital admissions and counts of currently in hospital may lag and are subject to change as the hospitalization information is tied to case investigation. Comparisons should not be made between the number of patients currently in hospital and new hospital admissions since hospitalization information is only updated once a patient is confirmed COVID-19 and admission information would then be updated retrospectively. For example, there can be a delay between when a patient is admitted to hospital, tested for COVID-19, and receive test results. If positive results are received, a case investigation begins and their hospitalization information is updated, resulting in a lag in the newly admitted and currently hospitalized information.



Table 4. Age of Ottawa residents with confirmed COVID-19 that have been hospitalized (cumulative) and in intensive care (cumulative) (n=1,802)

Measure	Cumulative Hospitalized		Cumulative Intensive Care	
	Number	Percentage	Number	Percentage
Case count	226	13%	58	3%
Age, median (range)	71 years (24 to 102)		65 years (32 to 91)	
Age		% within age group*		% within age group*
0 to 9 years	0	0%	0	0%
10 to 19 years	0	0%	0	0%
20 to 29 years	2	1%	0	0%
30 to 39 years	8	4%	3	1%
40 to 49 years	15	6%	6	2%
50 to 59 years	37	14%	15	6%
60 to 69 years	47	21%	16	7%
70 to 79 years	46	28%	11	7%
80 to 89 years	47	19%	6	2%
90+ years	24	13%	1	<1%

Notes:

1. Data are from the COD as of 2:00 p.m. on May 17, 2020.
2. * The percent of cumulative hospitalizations and cumulative intensive care admissions by age group uses the number of cases in the respective age group as the denominator.
3. Intensive care patients are a subset of hospitalized patients.
4. Confirmed cases are those with a confirmed COVID-19 laboratory result as per the Ministry of Health Public health management of cases and contacts of COVID-19 in Ontario. March 25, 2020 version 6.0.

Exposure Settings of Confirmed COVID-19 Cases

Table 5. Exposures of Ottawa residents with confirmed COVID-19

Exposure	Number	Percentage
Travel only	110	6%
Travel and contact with a case	41	2%
Contact with a case only	307	17%
Institutional	950	53%
Institutional and travel	3	<1%
No known exposure	341	19%
Undetermined	50	3%
TOTAL	1,802	

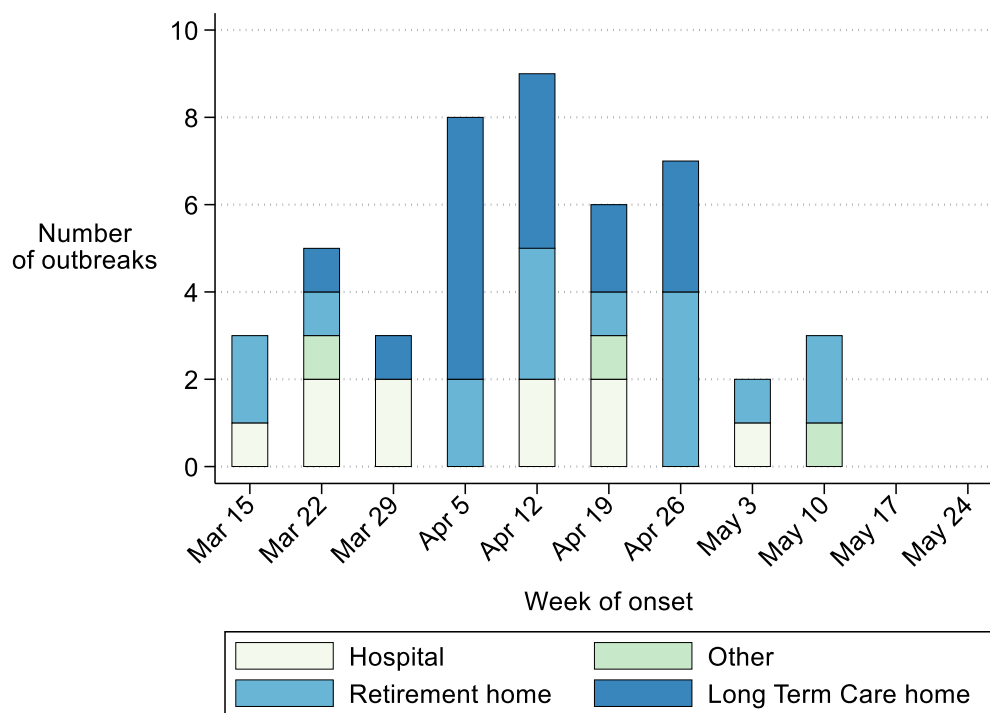
Notes:

1. Data are from the COD as of 2:00 p.m. on May 17, 2020.
2. "Institutional" exposures are assigned to residents/patients and staff associated with outbreaks in long term care facilities, retirement homes, group homes, and hospitals.
3. The number of cases with travel history has been revised downward since the last report on April 29 after additional chart review.



Outbreaks

Figure 5. Total number of COVID-19 outbreaks in Ottawa institutions³



Notes:

1. Data from iPHIS as of 4:00 pm on May 16, 2020.
2. 23 outbreaks are closed and 23 are active. Investigation and data entry are ongoing.
3. Institutions include long-term care homes, retirement homes, group homes and assisted living (other) and public hospitals.



Data Notes & Sources

Data extracted represent a snapshot at the time of extraction and may differ in previous or subsequent reports. These data sources are used:

- 1) Case information
 - a. Data are from [Ontario Data Catalogue](#) of confirmed positive cases of COVID19 in Ottawa downloaded 10:30am on May 17, representing data pulled from the Ottawa Public Health COVID-19 Ottawa Database (COD) as of 2:00 p.m. on May 17, 2020.
- 2) Outbreak information
 - a. Ontario Ministry of Health, integrated Public Health Information System (iPHIS), extracted by Ottawa Public Health at 4:00 p.m. each day.

iPHIS and the COD are dynamic disease reporting systems that allow for ongoing updates to data previously entered. Data extracted from these databases represent a snapshot at the time of extraction and can be different in previous or subsequent reports.

Please use the following citation when referencing this document:

Ottawa Public Health. COVID-19 Epidemiology Update. May 18, 2020. Ottawa (ON): Ottawa Public Health; 2020.

For further information about COVID-19 in Ottawa, visit ottawapublichealth.ca.



Data Tables

Data Table for Figure 1

Data for Figure 1 is now available at Open Data Ottawa and the Data Tables will be removed from the report going forward.

Earliest of Onset, Test or Reported Date or Date of Death	Cumulative Number of Ottawa Residents with Confirmed COVID-19	Cumulative Number of Ottawa Residents with Confirmed COVID-19 who died
2/10/2020	1	0
2/11/2020	1	0
2/12/2020	1	0
2/13/2020	1	0
2/14/2020	1	0
2/15/2020	1	0
2/16/2020	1	0
2/17/2020	1	0
2/18/2020	1	0
2/19/2020	1	0
2/20/2020	2	0
2/21/2020	2	0
2/22/2020	3	0
2/23/2020	4	0
2/24/2020	5	0
2/25/2020	5	0
2/26/2020	5	0
2/27/2020	5	0
2/28/2020	5	0
2/29/2020	5	0
3/01/2020	7	0
3/02/2020	9	0
3/03/2020	10	0
3/04/2020	11	0
3/05/2020	17	0
3/06/2020	22	0
3/07/2020	25	0
3/08/2020	34	0



Earliest of Onset, Test or Reported Date or Date of Death	Cumulative Number of Ottawa Residents with Confirmed COVID-19	Cumulative Number of Ottawa Residents with Confirmed COVID-19 who died
3/09/2020	42	0
3/10/2020	47	0
3/11/2020	56	0
3/12/2020	70	0
3/13/2020	92	0
3/14/2020	108	0
3/15/2020	135	0
3/16/2020	150	0
3/17/2020	171	0
3/18/2020	185	0
3/19/2020	210	0
3/20/2020	230	0
3/21/2020	251	0
3/22/2020	278	0
3/23/2020	299	0
3/24/2020	316	1
3/25/2020	340	1
3/26/2020	353	1
3/27/2020	371	1
3/28/2020	397	2
3/29/2020	413	2
3/30/2020	435	3
3/31/2020	450	3
4/01/2020	476	3
4/02/2020	495	5
4/03/2020	517	5
4/04/2020	533	6
4/05/2020	562	8
4/06/2020	580	9
4/07/2020	600	9
4/08/2020	622	11
4/09/2020	649	11



Earliest of Onset, Test or Reported Date or Date of Death	Cumulative Number of Ottawa Residents with Confirmed COVID-19	Cumulative Number of Ottawa Residents with Confirmed COVID-19 who died
4/10/2020	678	11
4/11/2020	712	11
4/12/2020	745	13
4/13/2020	762	16
4/14/2020	800	18
4/15/2020	826	23
4/16/2020	896	23
4/17/2020	934	25
4/18/2020	969	30
4/19/2020	984	34
4/20/2020	1043	38
4/21/2020	1078	45
4/22/2020	1121	52
4/23/2020	1163	55
4/24/2020	1197	63
4/25/2020	1302	71
4/26/2020	1370	80
4/27/2020	1434	86
4/28/2020	1470	92
4/29/2020	1500	100
4/30/2020	1527	107
5/01/2020	1554	119
5/02/2020	1573	131
5/03/2020	1596	137
5/04/2020	1616	149
5/05/2020	1646	151
5/06/2020	1666	154
5/07/2020	1690	161
5/08/2020	1704	169



Earliest of Onset, Test or Reported Date or Date of Death	Cumulative Number of Ottawa Residents with Confirmed COVID-19	Cumulative Number of Ottawa Residents with Confirmed COVID-19 who died
5/09/2020	1722	173
5/10/2020	1725	180
5/11/2020	1737	181
5/12/2020	1762	185
5/13/2020	1774	187
5/14/2020	1789	192
5/15/2020	1797	194
5/16/2020	1802	200
5/17/2020	1802	201



Data table for Figure 2 and Figure 3

Data for Figures 2 and 3 are now available at Open Data Ottawa and the Data Tables will be removed from the report going forward.

Earliest of Onset, Test or Reported Date	Daily Total of Sporadic COVID-19 Cases	Daily Total of COVID-19 Cases Linked to Community Outbreaks	Daily Total of COVID-19 Cases Linked to Outbreaks in Health Care Institutions	Daily Total of Ottawa Residents with Confirmed COVID-19
2/10/2020	1	0	0	1
2/11/2020	0	0	0	0
2/12/2020	0	0	0	0
2/13/2020	0	0	0	0
2/14/2020	0	0	0	0
2/15/2020	0	0	0	0
2/16/2020	0	0	0	0
2/17/2020	0	0	0	0
2/18/2020	0	0	0	0
2/19/2020	0	0	0	0
2/20/2020	1	0	0	1
2/21/2020	0	0	0	0
2/22/2020	1	0	0	1
2/23/2020	1	0	0	1
2/24/2020	1	0	0	1
2/25/2020	0	0	0	0
2/26/2020	0	0	0	0
2/27/2020	0	0	0	0
2/28/2020	0	0	0	0
2/29/2020	0	0	0	0
3/01/2020	2	0	0	2
3/02/2020	2	0	0	2
3/03/2020	1	0	0	1
3/04/2020	1	0	0	1
3/05/2020	5	1	0	6
3/06/2020	5	0	0	5
3/07/2020	3	0	0	3
3/08/2020	9	0	0	9



Earliest of Onset, Test or Reported Date	Daily Total of Sporadic COVID-19 Cases	Daily Total of COVID-19 Cases Linked to Community Outbreaks	Daily Total of COVID-19 Cases Linked to Outbreaks in Health Care Institutions	Daily Total of Ottawa Residents with Confirmed COVID-19
3/09/2020	8	0	0	8
3/10/2020	5	0	0	5
3/11/2020	9	0	0	9
3/12/2020	14	0	0	14
3/13/2020	20	0	2	22
3/14/2020	16	0	0	16
3/15/2020	27	0	0	27
3/16/2020	15	0	0	15
3/17/2020	21	0	0	21
3/18/2020	14	0	0	14
3/19/2020	25	0	0	25
3/20/2020	18	1	1	20
3/21/2020	20	0	1	21
3/22/2020	26	0	1	27
3/23/2020	20	1	0	21
3/24/2020	13	1	3	17
3/25/2020	22	0	2	24
3/26/2020	10	1	2	13
3/27/2020	13	2	3	18
3/28/2020	25	0	1	26
3/29/2020	11	2	3	16
3/30/2020	15	6	1	22
3/31/2020	12	1	2	15
4/01/2020	16	6	4	26
4/02/2020	10	5	4	19
4/03/2020	17	3	2	22
4/04/2020	7	5	4	16
4/05/2020	15	4	10	29
4/06/2020	7	2	9	18
4/07/2020	12	1	7	20
4/08/2020	9	2	11	22



Earliest of Onset, Test or Reported Date	Daily Total of Sporadic COVID-19 Cases	Daily Total of COVID-19 Cases Linked to Community Outbreaks	Daily Total of COVID-19 Cases Linked to Outbreaks in Health Care Institutions	Daily Total of Ottawa Residents with Confirmed COVID-19
4/09/2020	13	3	11	27
4/10/2020	11	1	17	29
4/11/2020	8	2	24	34
4/12/2020	12	1	20	33
4/13/2020	4	0	13	17
4/14/2020	9	0	29	38
4/15/2020	10	2	14	26
4/16/2020	17	1	52	70
4/17/2020	6	1	31	38
4/18/2020	8	0	27	35
4/19/2020	4	1	10	15
4/20/2020	14	1	44	59
4/21/2020	12	0	23	35
4/22/2020	9	1	33	43
4/23/2020	11	0	31	42
4/24/2020	4	0	30	34
4/25/2020	6	0	99	105
4/26/2020	12	0	56	68
4/27/2020	12	0	52	64
4/28/2020	10	0	26	36
4/29/2020	8	1	21	30
4/30/2020	12	0	15	27
5/01/2020	9	0	18	27
5/02/2020	7	0	12	19
5/03/2020	7	0	16	23
5/04/2020	6	0	14	20
5/05/2020	1	0	29	30
5/06/2020	5	1	14	20
5/07/2020	8	0	16	24



Earliest of Onset, Test or Reported Date	Daily Total of Sporadic COVID-19 Cases	Daily Total of COVID-19 Cases Linked to Community Outbreaks	Daily Total of COVID-19 Cases Linked to Outbreaks in Health Care Institutions	Daily Total of Ottawa Residents with Confirmed COVID-19
5/08/2020	5	0	9	14
5/09/2020	5	1	12	18
5/10/2020	2	0	1	3
5/11/2020	2	0	10	12
5/12/2020	4	0	21	25
5/13/2020	1	0	11	12
5/14/2020	2	1	12	15
5/15/2020	4	0	4	8
5/16/2020	2	0	3	5
5/17/2020	0	0	0	0

Data Table for Figure 5 updated reviewed

Week of symptom onset	Number of outbreaks in Ottawa hospitals	Number of outbreaks in other Ottawa institutions	Number of outbreaks in Ottawa retirement homes	Number of outbreaks in Ottawa long term care homes
Mar 15	1	0	2	0
Mar 22	2	1	1	1
Mar 29	2	0	0	1
Apr 05	0	0	2	6
Apr 12	2	0	3	4
Apr 19	2	1	1	2
Apr 26	0	0	4	3
May 03	1	0	1	0
May 10	0	1	2	0
May 18	0	0	0	0

